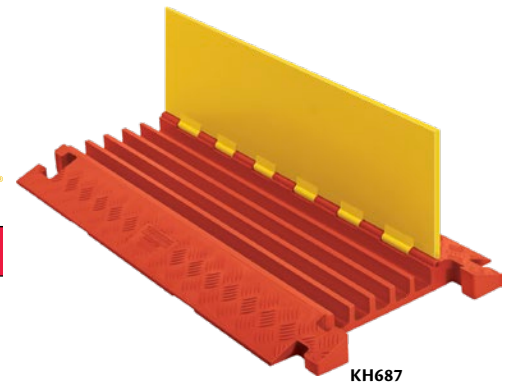


## LINEBACKER® CABLE PROTECTORS

- Most robust cable protection option
- High load bearing capacity for heavy equipment applications
- Ideal for: Manufacturing, Oil and gas, mining, military, construction and heavy-duty applications
- Protects cables and hoses
- All-weather polyurethane construction
- Easy to transport, setup, disassemble, and store
- Thick lid and base allow for high volume of traffic
- Modular interlocking design

Model No.	Mfg. No.	No. of Channels	Dimensions			Channel W" x H"	Max. Load Capacity lbs./tons		Price /Each
			W"	L"	H"		Tire	Axle	
KH702	CP1X125-GP-0	1	11.5	x 36	x 1.625	1.25 x 1.25	11 700/11.7	23 400/5.85	
KH699	CP2X325-Y/0	2	22	x 36	x 4.13	3.25 x 3.25	10 880/5.44	21 760/10.88	
KH695	CP3X225-Y/0	3	20	x 36	x 3.05	2.25 x 2.25	14 210/7.105	28 400/14.21	
KH691	CP4X125-Y/0	4	20	x 36	x 2.31	1.85 x 1.35	20 150/10.075	40 300/20.15	
KI046	CP4X300-Y/0	4	23.9	x 36	x 3.9	3 x 3	10 100/5.05	20 200/10.1	
KH700	CP5X125-GP-O/Y	5	17.25	x 36	x 1.9375	1.3 x 1.3	10 500/5.25	21 000/10.5	
KH687	CP5X125-Y/0	5	20	x 36	x 2.31	1.35 x 1.35	20 150/10.075	40 300/20.15	

**CHECKERS®**  
INDUSTRIAL SAFETY PRODUCTS, INC.



KH687

## GUARD DOG® LOW PROFILE CABLE PROTECTORS

- Protects cables and hoses
- Modular interlocking design
- Thick lid and base allow for high volume of traffic
- Easy to transport, setup, disassemble, and store
- Most versatile cable protection option
- Solid construction for pedestrian traffic, and over the road vehicles
- Ideal for: Utility, industrial, entertainment

Model No.	Mfg. No.	No. of Channels	ADA/DDA Access	Dimensions			Channel W" x H"	Max. Load Capacity lbs./tons		Price /Each
				W"	L"	H"		Tire	Axle	
KI120	GD1X75-ST-O/B	1	No	10.81	x 36	x 1.25	2.25 x 0.75	13 000/6.5	26 000/13	
KI117	GD1X75-O/B	1	Yes	27.25	x 36	x 1.25	2.25 x 0.75	23 000/11.5	46 000/23	
KI125	GD2X75-ST-O/B	2	No	11.94	x 36	x 1.25	1.5 x 0.75	13 000/6.5	26 000/13	
KI122	GD2X75-O/B	2	Yes	28.38	x 36	x 1.25	1.5 x 0.75	23 000/11.5	46 000/23	
KI136	GD3X75-ST-O/B	3	No	13.8	x 36	x 1.25	1.25 x 0.75	17 000/8.5	34 000/17	
KI133	GD3X75-O/B	3	Yes	30.3	x 36	x 1.25	1.25 x 0.75	27 000/13.5	54 000/27	
KI131	GD3X225-O/B	3	No	20	x 36	x 3	2.25 x 2.25	14 210/7.1	28 420/14.21	
KI151	GDSX75-ST-O/B	5	No	16.9	x 36	x 1.25	1.28 x 0.75	24 000/12	48 000/24	
KI148	GDSX75-O/B	5	Yes	33.3	x 36	x 1.25	1.28 x 0.75	34 000/17	68 000/34	
KI146	GDSX125-O/B	5	No	19.75	x 36	x 1.875	1.339 x 1.325	10 500/5.25	21 000/10.5	

**CHECKERS®**  
INDUSTRIAL SAFETY PRODUCTS, INC.



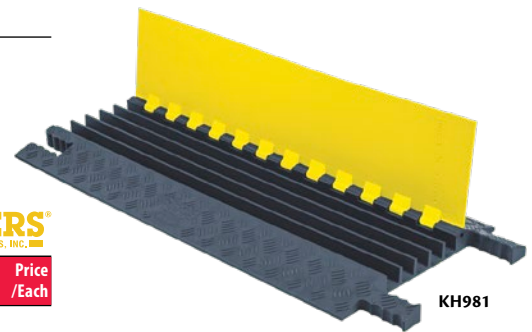
KI148

## GRIP GUARD® LIGHT-DUTY CABLE PROTECTOR

- Made from tough, high impact absorbing, non-conductive polyurethane
- Resistant to oil, fuels and lubricants
- Recessed carrying handle molded in to the underside of the protector
- Super lightweight: Up to 75% lighter than standard cable protectors
- Ideal for: Entertainment, light commercial and utility applications

Model No.	Mfg. No.	No. of Channels	Dimensions			Channel W" x H"	Max. Load Capacity lbs./tons		Price /Each
			W"	L"	H"		Tire	Axle	
KH981	GG5X125-Y/GRY	5	16.4/9	x 36	x 1.6	1.25 x 1.25	5000/2.5	10 000/5	
KH986	GG3X225-Y/GRY	3	18.2	x 36	x 2.67	2.25 x 2.25	5000/2.5	10 000/5	

**CHECKERS®**  
INDUSTRIAL SAFETY PRODUCTS, INC.

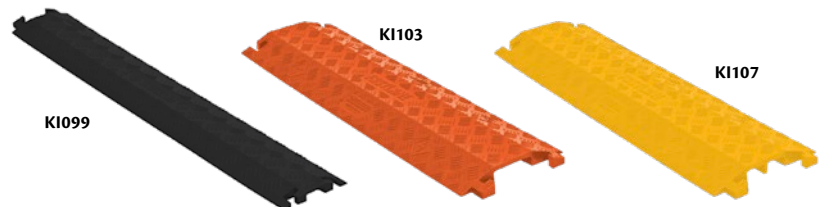


KH981

## FASTLANE® CABLE PROTECTOR

- Features drop-over design for quick cable set-up and disassembly
- Features patented 5-bar textured surface for maximum traction
- Ideal for lightweight vehicles and pedestrian traffic
- Features modular interlocking design
- Connector Type: L-connector
- Material: Polyurethane

**CHECKERS®**  
INDUSTRIAL SAFETY PRODUCTS, INC.



KI099

KI103

KI107

Model No.	Mfg. No.	No. of Channels	Dimensions			Channel W" x H"	Max. Load Capacity lbs./tons		Colour	Price /Each
			W"	L"	H"		Tire	Axle		
KI099	FL1X1.5-B	1	5.25	x 36	x 0.75	1.5 x 0.5	1050/0.525	2100/1.05	Black	
KI100	FL1X1.5-O	1	5.25	x 36	x 0.75	1.5 x 0.5	1050/0.525	2100/1.05	Orange	
KI101	FL1X1.5-Y	1	5.25	x 36	x 0.75	1.5 x 0.5	1050/0.525	2100/1.05	Yellow	
KI102	FL1X4-B	1	10.75	x 36	x 1.5	4 x 1	1050/0.525	2100/1.05	Black	
KI103	FL1X4-O	1	10.75	x 36	x 1.5	4 x 1	1050/0.525	2100/1.05	Orange	
KI104	FL1X4-Y	1	10.75	x 36	x 1.5	4 x 1	1050/0.525	2100/1.05	Yellow	
KI105	FL2X1.75-B	2	10.75	x 36	x 1.5	1.75 x 1	1050/0.525	2100/1.05	Black	
KI106	FL2X1.75-O	2	10.75	x 36	x 1.5	1.75 x 1	1050/0.525	2100/1.05	Orange	
KI107	FL2X1.75-Y	2	27.25	x 36	x 1.5	1.75 x 1	1050/0.525	2100/1.05	Yellow	